

*Department of
Radiology
Techniques
The Second Stage*



Leg (Tibia-Fibula)

Lecture 9

Assist. Lecturer

Tariq Nadhim Jassim

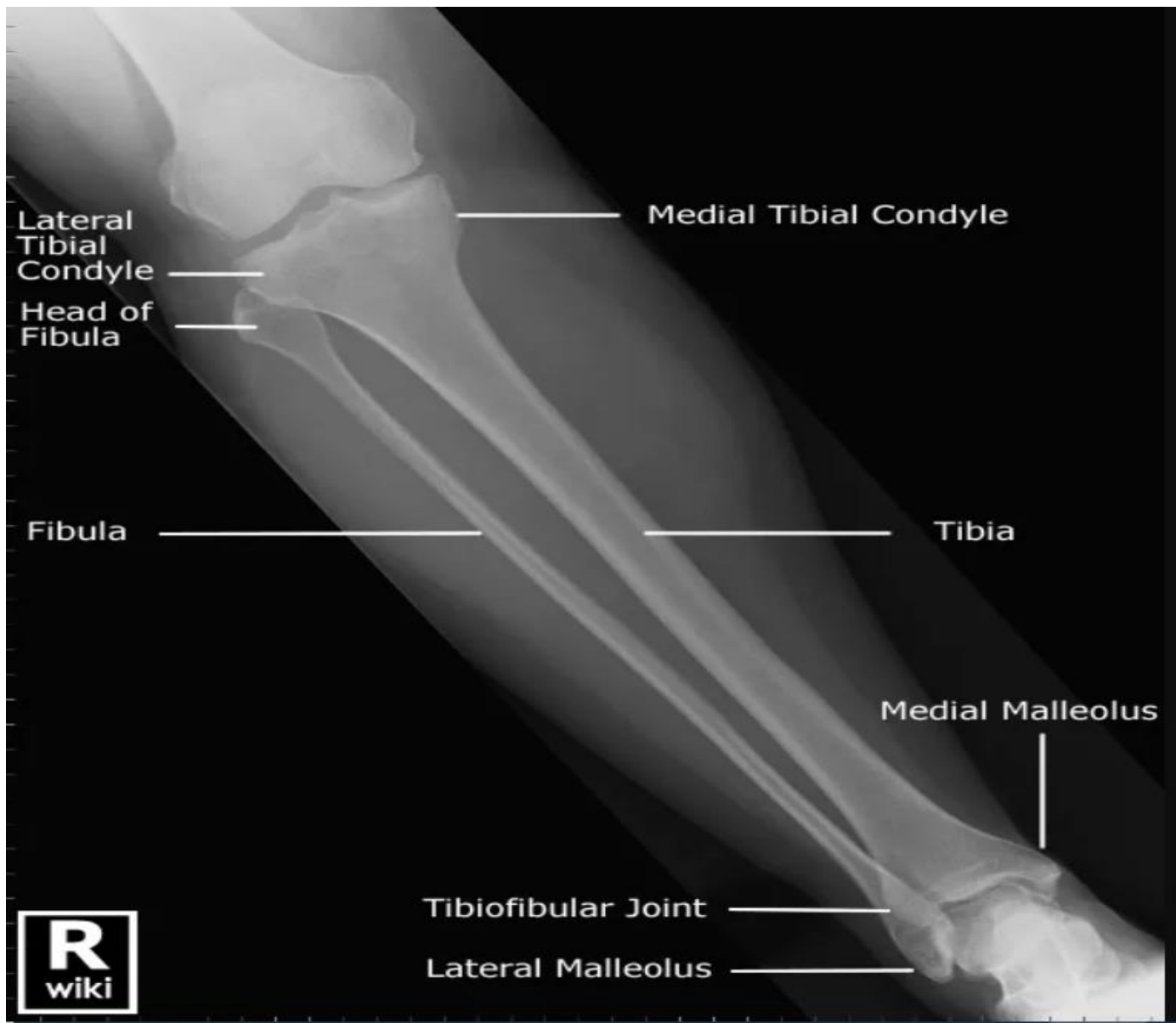
Fadhil Aad Leftah Al-zurfi

Basic Positions of Leg

1- Anterior – Posterior

2- Lateral

Cassette out – Bucky (14x17 Inch)



Lateral
Tibial
Condyle
Head of
Fibula

Medial Tibial Condyle

Fibula

Tibia

Medial Malleolus

Tibiofibular Joint

Lateral Malleolus



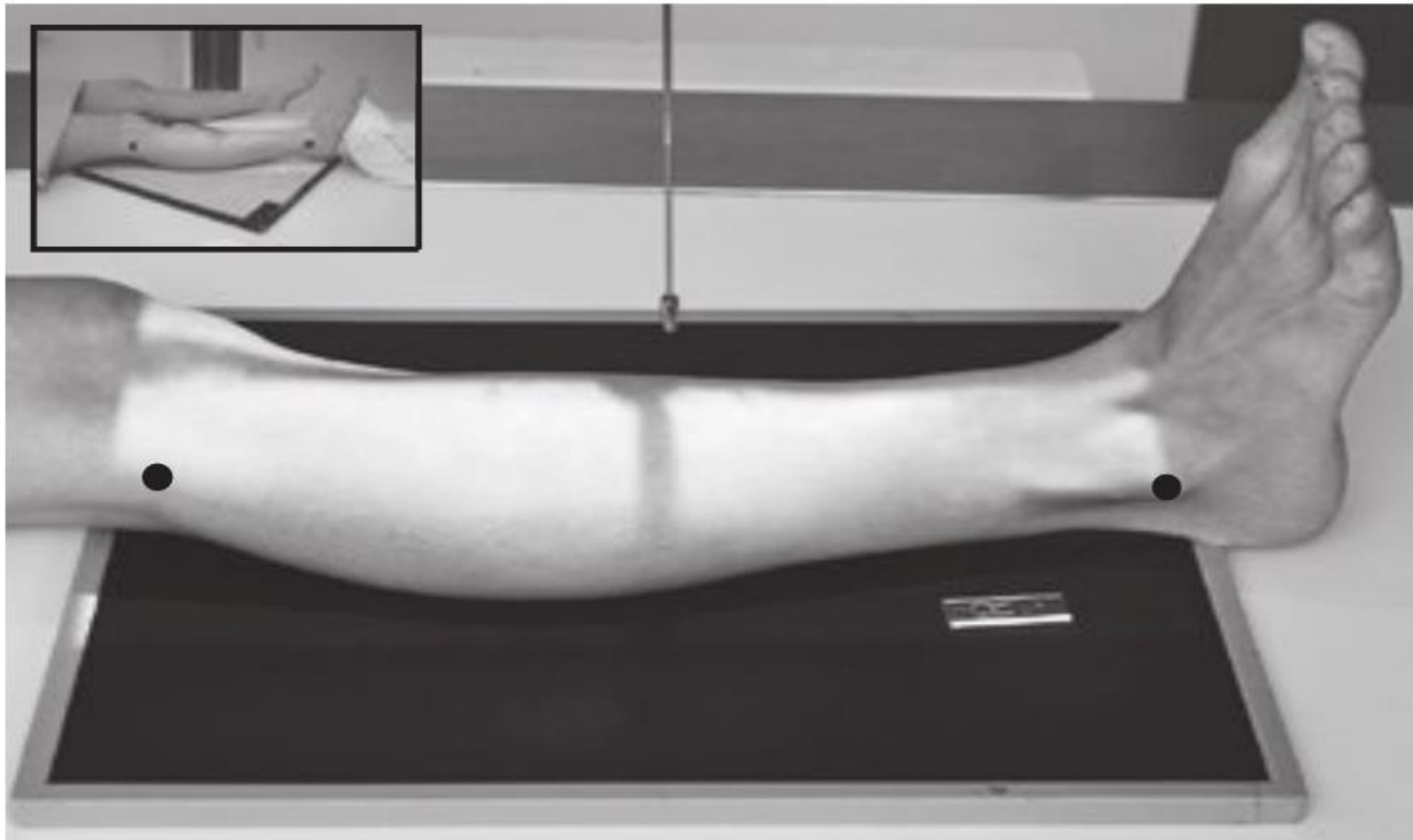
1- Anterior – Posterior

Position of Patient

- The patient is either supine or seated on the X-ray table, with both legs extended.
- The limb is rotated medially until the medial and lateral malleoli are equidistant from the cassette,, the cassette is (14x17) positioned out Bucky.

Direction and centering of the X-ray beam

- Center of x-ray to the middle shaft of the tibia.





Antero-posterior



spiral fracture of tibia



Antero-posterior radiograph showing fracture of proximal fibula and distal tibia

2- Lateral

Position of Patient

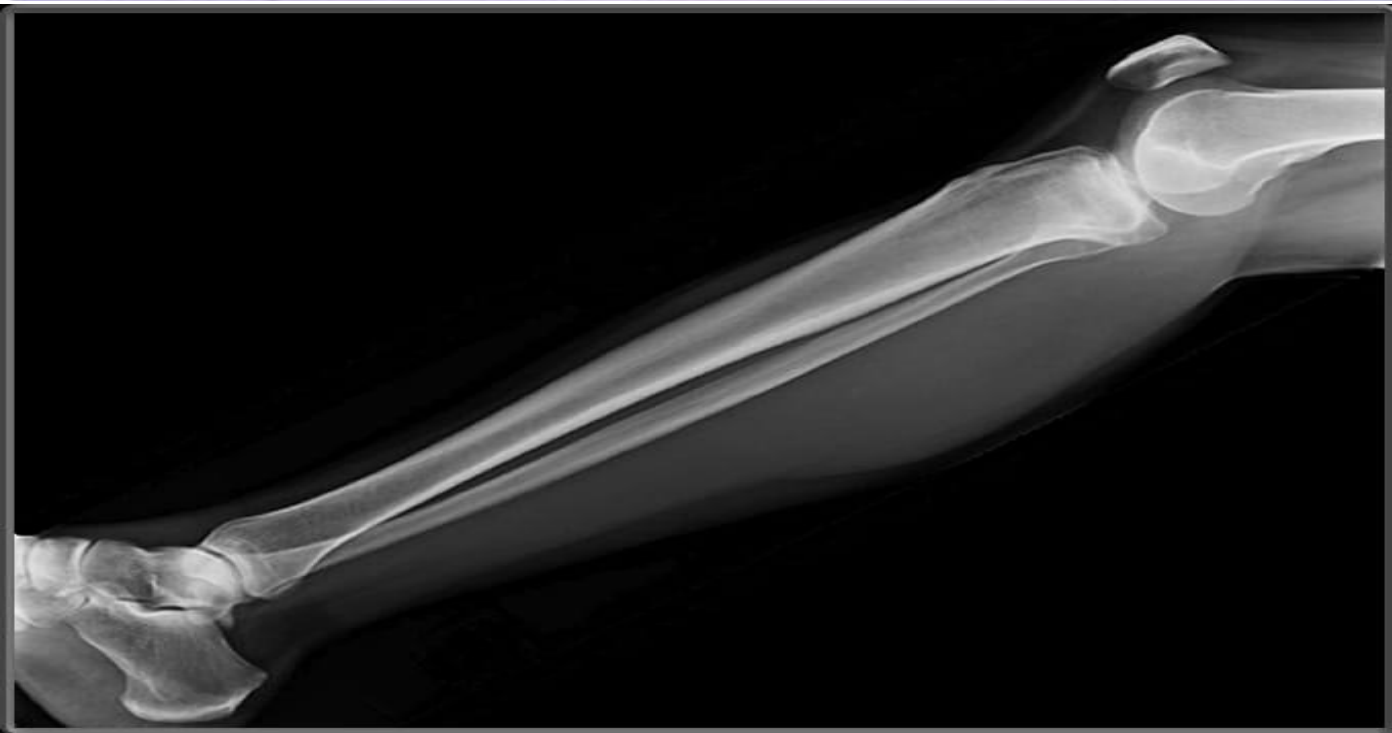
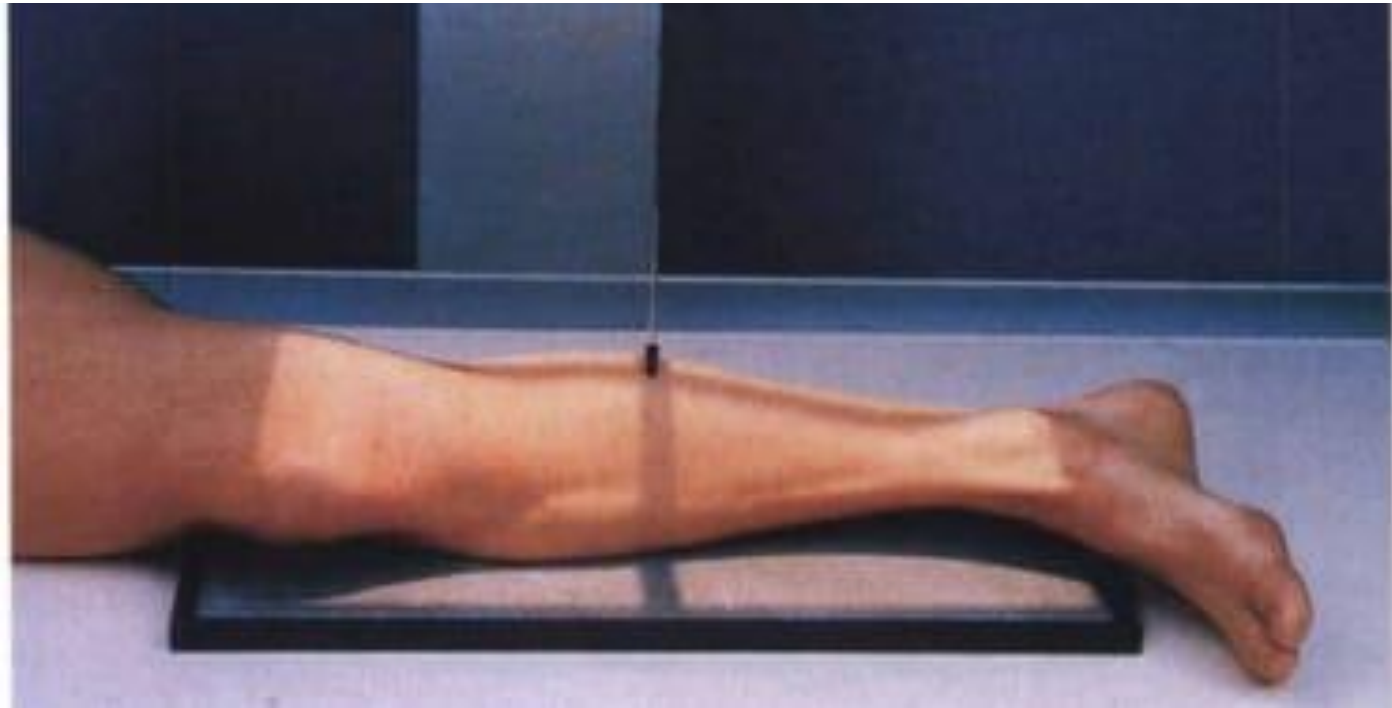
- From the supine/seated position, the patient rotates on to the affected side.
- The leg is rotated further until the malleoli are superimposed vertically.
- The tibia should be parallel to the cassette , the cassette is (14x17) positioned out Bucky.

Direction and centering of the X-ray beam

- Center of x-ray to the middle shaft of the tibia.

Image Characteristics

- The knee and ankle joints must be included, since the proximal end of fibula may also be fractured when there is a fracture of the distal fibula.



Lateral

Thanks

